



Ovation
MEDIA SERVER & SEQUENCER

Installation Guide





No part of this documentation may be reproduced in any form whatsoever or be stored in any data retrieval system without prior written permission of the copyright owners.

This documentation is supplied on an as-is basis. Information contained within this documentation is subject to change at any time without notice and must not be relied upon.

All company and product names are [™] or Registered Trademarks [®] of their respective owners. Windows 7, Windows and Windows 8 are trademarks of Microsoft Corporation.

Merging Technologies makes no warranties express or implied regarding this software, its quality, performance, merchantability or fitness for a particular purpose. The software is supplied "as is" you, the purchaser, are assuming the entire risk of the results of using this Merging Technologies software.

In no circumstances will Merging Technologies, its owners, directors, officers, employees or agents be liable to you for any consequential, incidental or indirect loss or damages including loss of time, loss of business, loss of profits, loss of data or similar resulting from the use of or inability to use the Merging Technologies hardware and or software or for any defect in the hardware software or documentation.

© Copyright Merging Technologies Inc. 2016. All rights reserved

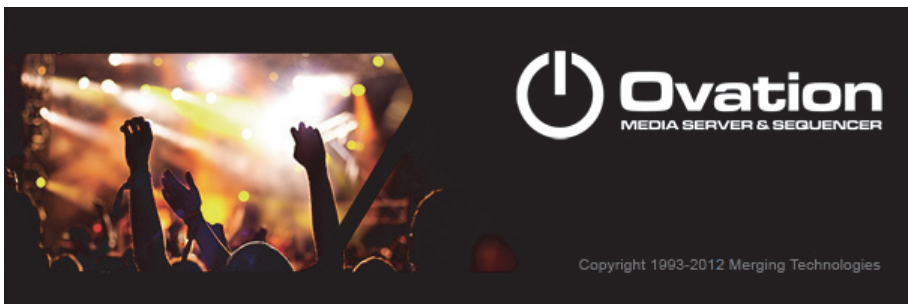




Installation Guide : Contents

1 Introduction	7
Thank you!	7
Scope	7
2 Ovation Overview	10
3 For Users Performing Upgrades	12
4 System Requirements	13
Ovation MassCore Systems	13
Ovation Native	13
MassCore and Networks	14
5 PC Setup	17
Motherboard Drivers and Utilities	17
BIOS Settings	17
Display Settings	17
Power Management	18
Aero graphics	18
Indexing	18
Other Applications	18
6 Ovation Software Installation	19
Installation Overview:	19
Driver Signing	20
Flux VS3/V3 plug-ins	20
VB VS3 plug-ins	20
Running the Installer	20
7 Ovation Software Registration	21
8 MassCore Installation	23
64 Bit MassCore Notes	25
Re-licencing MassCore 64 bit RTX	26
9 MassCore - Ravenna	27
Install the NET-MSC-GBEX1 Ethernet Card	27
Troubleshooting	30
10 Native - ASIO	32
11 First launch	33
12 Troubleshooting	35
13 Lost or Stolen Merging Technologies Security Keys	36
14 Contacting Merging	37
International Office:	37
UK:	37
USA:	37

Installation Guide



Document: Ovation™ v6.x Installation Guide rev1
Date: 13th February 2016



1 Introduction

Thank you!

Congratulations on your purchase of the **Ovation** Media Server & Sequencer.

Ovation is a ground-breaking Media Server and Sequencer with the tools you need to produce and run shows in many spheres of activity. For example:

- Theatres
- Theme Parks
- Museums
- TV Game Shows
- Trade Shows
- AV Presentations
- Radio stations
- Retail Outlets
- Film Festivals

are just a few of the possible applications for Ovation.

Note: IMPORTANT! - The first thing you need to do is register your software to acquire your Ovation key(s) and to be included in our user support list.

<http://www.merging.com/register/>

Please also subscribe to the User Forum at:

<http://www.merging.com/forum/>

Scope

This document is intended to get you up and running with Ovation and as quickly as possible. For more detailed information about Ovation, Pyramix and VCube please see the PDF User Guides which are installed with the software.

Important! If you are installing an upgrade to Ovation please read: **For Users Performing Upgrades on page 12** first.

If you have purchased Ovation as an integrated (Turnkey) system, the installation information in this guide will be redundant, since these systems come with all hardware and software pre-installed. If you are configuring your own system, please refer to the following instructions.



Ovation Versions - Compatibility and Installation Steps

Native (ASIO on 3rd party hardware):

Compatibility: Windows 7 32 bit and 64 bit

Installation Steps:

- Ovation Software Installation, See: *Ovation Software Installation* on page 19
- Entering Authorization Keys, See: *Ovation Software Registration* on page 21
- Select ASIO and the correct card/device in the VS3 Control Panel (*Start Menu > Control Panel > VS3 Control Panel*)

Native with ASIO for Ravenna and Horus/Hapi:

Compatibility: Windows 7 64-bit and Windows 8.1 Professional 64-bit

Installation Steps:

- Install the Merging RAVENNA ASIO Driver provided with your Horus / Hapi or available from:

<http://www.merging.com/download>

- Select ASIO and the correct card/device in the VS3 Control Panel (*Start Menu > Control Panel > VS3 Control Panel*)
- Optional: Pyramix Software Installation See: *Pyramix Software Installation* on page 17
- If Pyramix Software is installed: Entering Authorization Keys See: *Pyramix Software Registration* on page 19
- Select the desired network adapter in Merging Ravenna ASIO Panel (*Start Menu > All Programs > Merging Technologies > Merging Ravenna ASIO Driver > Merging Ravenna ASIO Panel*) please see details in the Merging Ravenna ASIO and CoreAudio Guide available in *Start Menu > All Programs > Merging Technologies > Documentation > Merging Ravenna ASIO Driver > Merging Ravenna ASIO Panel*
- Select ASIO/Ravenna in the VS3 Control Panel (*Start Menu > Control Panel > VS3 Control Panel*)

Mykerinos only:

Not supported on version 6.x

MassCore with Mykerinos:

Not supported on version 6.x



MassCore with Ravenna and Horus/Hapi:

Compatibility: Windows 7 64-bit

Installation Steps:

- NET-MSC-GBEX1 Installation See: *Installing the Merging Technologies NET-MSC-GBEX1 PCIe Ethernet Controller Card* on page 23
- Ovation Software Installation, See: *Ovation Software Installation* on page 19
- Entering Authorization Keys, See: *Ovation Software Registration* on page 21
- MassCore Installation, See: *MassCore Installation* on page 21
- Select MassCore with Ravenna in the VS3 Control Panel (*Start Menu > Control Panel > VS3 Control Panel*)

Quick Setup Checklist For Systems with Horus/Hapi

1. MassCore users MUST uninstall the previous MassCore version from the Windows Control Panel (Interval Zero RTX runtime).
2. MassCore users MUST configure their BIOS settings. *Please see: BIOS Settings* on page 17
3. Disable Windows Firewall in Windows Control Panel Security.
4. Increase Scheduling Priority. *Please see: MassCore and Networks* on page 14
5. Install Google Chrome.
6. Install Pyramix v10.x or Ovation v6.x.
7. Enter your new v10/v6 keys in MT Security Settings.
8. Also in MT Security Settings install MassCore from the MassCore Tab.
9. MassCore SMP users (recommended for i7 CPU configurations and above) should launch the VS3 Control Panel and assign 2 cores to MassCore. (A reboot will be required.)
10. Shut down the system and install the MassCore NET-MSC-GBEX1 PCIe Ethernet controller card. (Card drivers are included in the Pyramix and Ovation installers.)
11. In the VS3 Control Panel ensure that Ravenna is selected in the Hardware section.
12. Configure the Switch/Router Please refer to the Ravenna Network Guide.
13. Launch Ovation.
14. You can also launch the MTDDiscovery application and open the Horus entry for remote access.
15. Ensure that the Horus is set to the same sampling rate as Pyramix or Ovation. A warning prompt will appear if this is not the case.
16. Configure I/O as required in Pyramix/Ovation and Horus. Ravenna users should consult the Ravenna Easy Connect Guide.



2 Ovation Overview

Ovation enables the user to run Cues of many Media and Command types, either manually like a spot player / cartridge machine or automatically against Run-time, Time-of-day or external LTC or MIDI TimeCode. The Ovation Sequencer can be controlled from a hardware controller, touch screens, GPIs, Sony 9-pin (P2) Protocol commands and MIDI.

Ovation consists of three modules, the OVPlayer, OV Controller and the OVSequence Designer / Show Controller. OVPlayer and OV Controller can be embedded into the main Ovation application, or run stand-alone on the same machine or any machine accessible on the network. By default the embedded player is enabled.

Ovation also includes the renowned Pyramix DAW.

For many applications the optional Ovation hardware controller will be highly desirable. VCube fully supports the Merging Technologies Virtual Transport technology.

Ovation Versions

Ovation is available in three main versions with a number of options.

Ovation Silver Designed for cut down systems where simple audio playback is needed.

Add the optional WebServer to be able to take control of your show from ANY web-connected device (Desktop, Laptop, SmartPhone, TabletPC).

Includes:

- Audio playback with up to 48 matrix outputs (with proper hardware)
- VST support
- MIDI and GPI/O support
- Pyramix editing
- Designed for Broadcast Playout, Small theatres, and where connection to a larger system of control is not necessary
- Optional WebServer

Ovation Gold Packaged for applications where the event also has show control requirements. Whether being controlled by an external show controller, or running the show itself, Ovation Gold delivers all the tools necessary to run a show, from pre-production to show-time.

Also, with a full Pyramix Virtual Studio Option set in the same box, the Ovation system becomes a true dual-purpose device by turning it into a large track-count recorder/editor/mix system at the touch of a button!

As with the Silver package, you can choose to add the Ovation WebServer option to the Gold package. With the ability to load multiple access points for a single show, distributing information and control has never been simpler.

Includes:

- All the Ovation Silver pack options
- Pyramix VS3 low-latency plugin support
- Support for all other control protocols (LTC, RS-422, MSC, Script/Batch files)
- Pyramix Music Pack
- Optional WebServer

Ovation Platinum The ultimate Ovation pack, Ovation Platinum features all the options available with the Gold package and adds to it our vast knowledge and experience in delivering a mix engine of truly astonishing size. In one Ovation Chassis, you can now harness the power of a 384-track mixer with another 384 channels of bussing, configurable as any amount of mono/stereo/surround busses that your show may need! Add to that a comprehensive Scene Snapshot and recall list with integrated glide times and a virtual large-format mixing console is included "in the box."



The Ovation WebServer option is included in the cost.

Includes:

- All the Silver and Gold packages options
- Track count up to 384 I/O @1Fs
- Integration with SmartAV Tango controller
- Support for Oasis/Eucon/HUI protocols
- Scene Snapshots and recall with user programmable glide times for anything from a single band of EQ gain all the way up to the entire mix-engine surface.
- Ovation WebServer option included

Items included with Ovation:

- Installation Media with Ovation, Pyramix and VCube software. This Installation Guide.
- Sentinel USB security dongle. The security dongle authorizes both the Ovation application and any optional features.

Complete turnkey systems are available.

If you have purchased Ovation as an integrated (Turnkey) system, the installation information in this guide will be redundant, since these systems come with all hardware and software pre-installed. If you are configuring your own system, please refer to the following instructions.



3 For Users Performing Upgrades

Note: New v6 Keys have been issued for Ovation v6 users. Be aware that v5 keys will only work with the Beta versions of Ovation 6.

Ovation

We recommend uninstalling any previous version of Ovation before installing Ovation 6.

From the Windows Control Panel select **Programs and features**.

Remove the installed version of Ovation.

Masscore

MassCore users **MUST** remove the existing MassCore runtime. Once you have installed Pyramix v10.x follow these steps:

1. Ensure that you are logged on to your system with the User Account which was used to install MassCore in the first place. (This information can be retrieved with our MassCore Troubleshooting Guide - see below.)
2. Launch MT Security Settings and select the MassCore tab.
3. Click on the Uninstall MassCore Runtime button.
4. When the uninstall completes reboot the system.
5. After the system reboot return to MT Security Settings and select the MassCore tab.
6. Click on the Install MassCore to install the new version of MassCore.
7. Reboot the machine.

Note: A second automatic reboot will occur after the first login.

Note: After the installation you should see two Interval Zero entries in Windows Control

Panel > Programs and Features which are:

For 64 bit systems:

1. Interval Zero RTX64 2013 Runtime with Service Pack 1

If these entries are not present please refer to the troubleshooting advice document here:

http://www.merging.com/uploads/assets/Installers/Pyramix_8_1/IntervalZeroRTX_Uninstall_Troubleshoot.pdf

Following the install of Ovation v6.0 you will then need to install the new **MassCore Runtime** from the **MT Security Settings : MassCore Tab**.



4 System Requirements

Wintel platforms tend to increase in number of cores, speed and performance at a tremendous rate. New and faster processors are released almost on a monthly basis. Therefore we have not included suggested Motherboard or Processor specifications here.

We maintain a list of up to date PC configurations in the Support Section of our website at:

<http://www.merging.com/pages/pconfig>

Other Components

- Graphics Card: In many situations the Intel Integrated Graphics (where supported by the motherboard and CPU) are perfectly adequate. If a graphics card is desired or required Merging recommend the ATI FIREPRO series of PCIe graphics cards.
- Sufficient HD space and speed for your audio media files. The speed and amount of disk space required depends on sample rate, wordlength, number of tracks and length of program material.
- A typical 7200 RPM SATA drive is sufficient for 48 tracks at 48 kHz. Higher track-counts and/or higher sampling rates will require an SSD drive and/or multiple drives configured in Raid 0, 1, 10 or 5.
- We recommend disks should be formatted as **NTFS** volumes with 64kB block sectors.
- **BD/DVD/CD-ROM** combo drive or better (optional).
- SXGA 17" monitor or better. Multiple 19" or larger monitors highly recommended.

Minimum resolution 1280x1024

- 3 button mouse

Note:

Ovation MassCore Systems

Certified Operating Systems

- **OS:** We recommend and certify **Ovation Version 6.0 and later** under **Windows 7 Professional 64-bit ONLY**

Ovation Native

Certified Operating Systems

- **OS:** We recommend and certify **Ovation Version 6.x** under **Windows 7 Professional, 64-bit version** and **Windows 8.1 Professional 64-bit**.



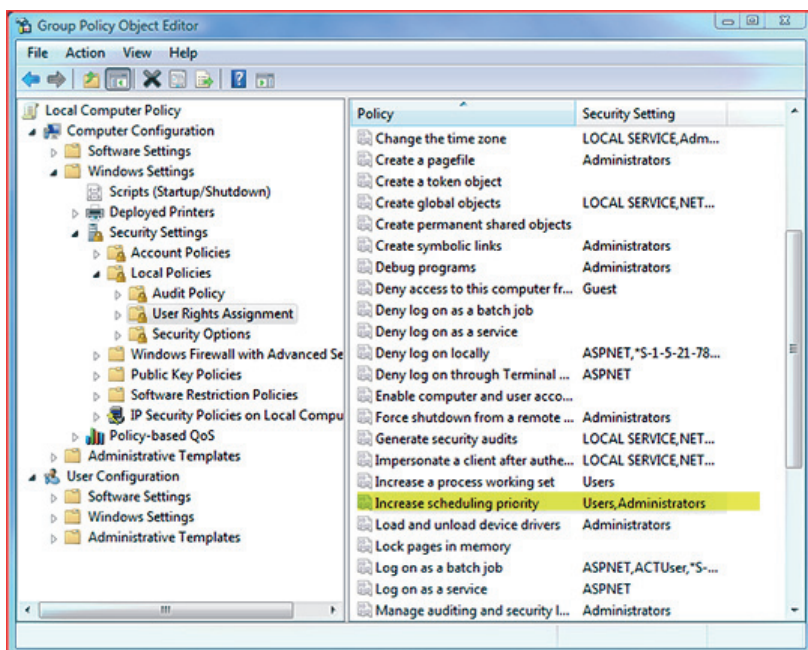
MassCore and Networks

Increase Scheduling Priority

For satisfactory operation over a network, you must add the User Group to which the User belongs to "Increase Scheduling priority policy" with the help of **gpedit.msc**. If the Machine belongs to a domain the **Administrator** of the domain must do this, if not then the Administrator of the system.

Procedure

1. Open the **Local Group Policy Editor**.
Start > Accessories > Run and type or paste **gpedit.msc**.

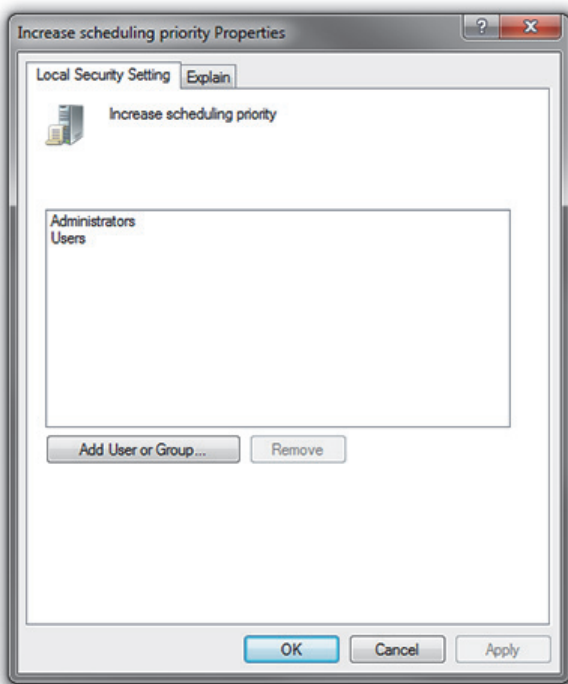


MassCore Windows GPO Editor Window

2. Navigate to: **Computer Configuration > Windows Settings > Security Settings > Local Policies > User Rights Assignment**

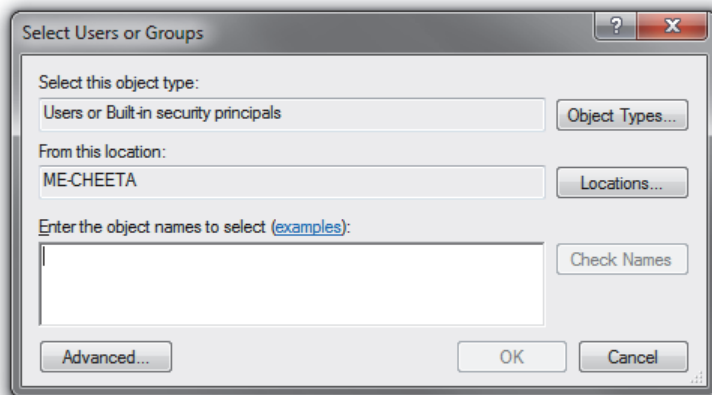


3. Double-click on **Increase scheduling priority** to open the **Increase scheduling priority Properties** dialog:



Increase scheduling priority Properties dialog

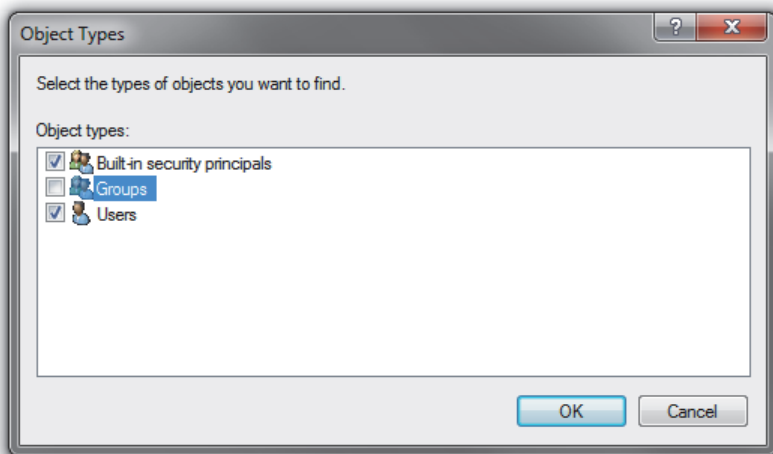
4. Click on the **Add User or Group** button to open the **Select Users or Groups** dialog:



Select Users or Groups dialog



5. Click on the **Object Types** button to open the **Object Types** dialog:



Object Types dialog

6. Ensure that **Groups** is ticked and click on **OK** to close the dialog.
7. In the **Select Users or Groups** dialog type the name of the User Group the user or users belong to (e.g. **Users**) in the **Enter the object names to select** field and click on the **OK** button to close the dialog.
8. The Group name you typed in step 5.) should now appear in the **increase scheduling priority Properties** dialog list.
9. Click on the **OK** button to close the dialog.

Note: that the **Groups** selection in the **Object Types** dialog is temporary and must be selected every time you wish to add or remove a Group.



5 PC Setup

Motherboard Drivers and Utilities

Motherboard drivers should be updated to current versions.

Motherboard Utilities should NOT be installed.

BIOS Settings

Recommended BIOS Settings

The following features can create MassCore overloads (blinking red **MSC**).

Intel® Hyperthreading Technology is supported on 64 bit MassCore systems as of v5.x but **NOT** on 32 bit systems, this setting must be disabled for the relevant CPU(s). This setting is commonly found in Main Bios page, or under CPU configuration. (see the motherboard manual for further details).

Intel® Speedstep Technology (also known as Enhanced Intel® SpeedStep), as well as CPU C State (or Intel® C-State) features must be disabled in the BIOS.

Some Recent Intel boards have a global setting to disable those features known as Intel® Dynamic Power Technology. If present this should be turned off. These settings are commonly found in BIOS Power options or CPU Configuration.

Overclocking is not supported.

Display Settings

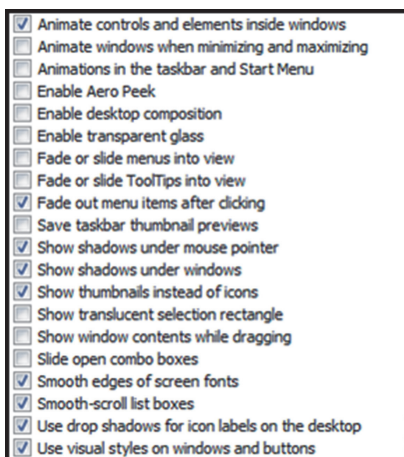
Pyramix requires a minimum display resolution of 1280x1024 in 256 colors which **MUST** be set to **small fonts** mode.

Please use the following recommended Display settings:

Start by selecting the **Windows 7 Basic Theme** (Especially for MassCore users) from the **Windows Control Panel > Personalization**

Then make the following Advanced Settings.

Windows Control Panel > System > Advanced System Settings opens the **System Properties** window. Select the **Advanced tab > Performance Settings** to open the **Performance Options** window. Choose the **Visual Effects Tab**:





Disable the following settings by unticking the boxes to prevent MassCore peaks:

- Animate Windows when minimizing and maximizing - disable
- Animations in the taskbar and Start Menu - disable
- Aero Peek - disable
- Enable desktop composition - disable
- Enable transparent glass - disable
- Fade or slide menus into view - disable
- Fade or slide ToolTips into view - disable
- Save taskbar thumbnail previews - disable
- Show translucent selection rectangle - disable
- Show window content while dragging - disable
- Slide open Combo boxes - disable

Power Management

N.B. As with other Digital Audio Workstations and Non-Linear Editors, we recommend setting the PC to an **Always On** Power management scheme. (In Windows XP: **Start > Settings > Control Panel** double-click **Power Options**. Choose **Always On** from the **Power Schemes** drop down list.) This allows the monitor to be turned off by the system but disables hard-disk spin down and Standby.

MassCore is **not** designed to support Standby modes.

Aero graphics

Windows 7 users should disable AERO themes for maximum performance.

Indexing

In the interests of better performance we recommend turning Indexing OFF for all Data drives in the system.

Other Applications

Like all Digital Audio Workstations, Pyramix works best when there are no other unnecessary applications or services running.



6 Ovation Software Installation

Note: You must have full Administrator Access to install Ovation.

Installation Overview:

Note: If you have purchased hardware options such as Mykerinos cards, the NET-
MSC-GBEX1 PCIe Ethernet card, and or the Sync Board, please install these first fol-
lowing the instructions in the accompanying documentation.

Installer

The Ovation software uses an automated installer wizard which will install all necessary prerequisites. We use a unified installer package containing the current versions of Pyramix, VCube and Ovation. The initial installer screen offers the choice of Pyramix, VCube and Ovation. Choosing Ovation will also install Pyramix.

You may exclude the installation of any of the individual components in the wizard, if the device in question is not present on your machine or if you do not intend to use an item, by un-ticking the tick boxes next to the items listed in the wizard.

Note: Note: The security dongle must be in place and the security keys entered before attempting to launch VCube.



Driver Signing

There is no **Driver Signing Options** dialog in Windows 7.

Windows throws up a warning dialog when unsigned drivers are installed. To avoid the necessity of clicking on **OK** several times you may wish to check the **Always Trust Drivers from Merging Technologies** box.

Flux VS3/V3 plug-ins

The Flux plug-ins are not bundled in the installer, they must be installed separately. Two versions are available, 32-bit and 64-bit. Download the appropriate installer and ensure you have valid Merging Flux v3 Keys in order to run these Flux VS3 plug-ins.

<https://www.fluxhome.com/download>

Please download the **Flux VS3 for Pyramix v10 installer**.

VB VS3 plug-ins

VB VS3 plug-ins are installed by default with a complete Pyramix install. If you do not wish to have them installed, e.g. in evaluation mode or if you do not have valid keys then select Custom during the Pyramix install and remove them from the install by right-clicking on them.

Running the Installer

Note: If you have a **SafeNet** dongle please remove this before installing Ovation and replace it after installation is complete.

Note: The HASP dongle is not supported on 64-bit systems. If you have a HASP dongle please contact your Merging Technologies Sales Partner to purchase a SafeNet dongle and transfer your keys.

Once the NET-MSC-GBEX1 Ethernet card and or Mykerinos card(s) have been properly installed, you can now install the Ovation v6.x software.

To install the Ovation v6.x software insert the USB memory stick. The installation program will auto-start on a PC where auto-start is configured **on**. Otherwise, double click on the USB memory stick icon.

Note: If the installation appears to freeze for a long period please check that the **Driver Signing** warning dialogue is not hidden behind another Window. Installation will not continue until you click **OK** in this dialog.

WARNING: Certain computers do not properly shut down despite the reboot command issued by the installer but only perform a log off. In this case, please activate a full shut down manually.



7 Ovation Software Registration

The **Ovation** software and its various software options are protected by an authorization key mechanism which uses a unique registration key number generated by Merging Technologies. Based on purchased software components, this key is unique to your security dongle or Mykerinos board serial number, your Company Name and your User name. Once you have registered your software you will be provided with this Key or Keys (depending on the chosen options).

In a multi-board system only one key is required for all connected boards. The master board validates the others.

If you did not receive this key, have lost it or would like to change the user and/or company name, please contact your Merging Sales Partner with your Mykerinos serial #, your User Name, your Company Name and the list of purchased software components. Usually, a key can be issued within one business day, after the verification of your personal data has been completed.

Entering your Key(s)

After the Ovation installation process you will be prompted to enter your **Authorization Key**. If you click **Yes** the **MT Security Settings** dialog will be launched automatically, allowing the Key or Keys to be entered immediately. If you choose not to enter your Key at this point you can do so later by choosing one of the following procedures:

1. Double-click the file **YourPersonalKeyXXXXX.mtk**. This is attached to the email containing your Key(s).
2. Open the **MT Security Settings Control Panel**
(Windows Task Bar **Start > Control Panel > MT Security Settings**),
click the **Import Key** button and browse for your Key file called

YourPersonalKeyXXXXX.mtk

3. Open the **MT Security Settings Control Panel** (as above), in the **Registration** section select the board number corresponding to the serial number for your Keys or HASP/SafeNet Key for a dongle, click the **Enter Key** button and type your **User Name**, **Company Name** and **Key** then click **OK**. Repeat this step for each Keys listed in the email.

Changing or re-entering a Key

Should you need to subsequently change or re-enter a **Key**, follow the appropriate option above.

The key system is "smart". Only one key or set of keys is required regardless of the number of boards in a system. Any card can hold this key set as the authorization is processed based on a "Logical OR" of all keys present on any and all Mykerinos boards. Of course this Logical OR will only process keys with identical User Name and Company Name to the one entered in the key enabling window.

Evaluation Mode

If started without a valid registration key, the software will recognize that no valid key is available and will start in "evaluation" mode, which only allows for basic operation of the software as follows:

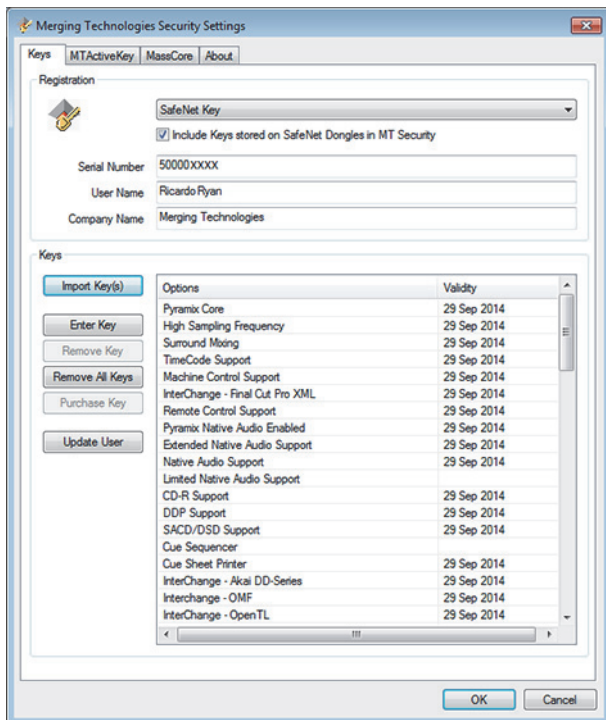
- Limited to 2 channels of I/O on host soundcard
- No **Project > Save** function
- Tone is added to new recordings
- All optional extra cost features are deactivated

All editing functions, playback, file type conversions etc. are fully functional.



Keys

At any time you can check the serial number of your Security dongle or Mykerinos card(s) and the software options enabled in your system in the **MTSecurity** application.



MT Security Settings - Keys tab



8 MassCore Installation



System Requirements

A quad core Intel processor is the minimum requirement.

Conditions

- You **MUST** be logged in as an **Administrator** to install **MassCore**
Note: You do not need to be logged in as an Administrator to **RUN** Pyramix with MassCore™, just to install it.
- You must have at least one Mykerinos board or a NET-MSC-GBEX1-Ethernet card in your system.
- You must have a MassCore 48 (Base) Key in order to proceed with the installation. Please contact your Merging Technologies Sales Partner if you do not have this option but want to use MassCore.

MassCore Installation

1. Install V6.x Ovation.exe
2. Restart your system after the Ovation install.
3. During the system restart select the non-MassCore boot line entry. (Typically **Windows 7 (x64)**).
4. Open the VS3 Control Panel and choose the Uninstall MassCore RunTime option and reboot. There will be two consecutive reboots.
Note: If you have booted your system and did not select the MassCore Boot line while it was available and installed and had already entered your keys you will have an **Install MassCore RunTime** option instead. You must proceed with the step 1 description.
5. Once MassCore had been removed, reboot selecting the NON-MassCore Windows Boot line. If you experience any problems please refer to the Troubleshooting document here:

http://www.merging.com/uploads/assets/Installers/Pyramix_8_1/IntervalZeroRTX_Uninstall_Troubleshoot.pdf

6. Enter Your Key(s) in **MT Security Panel** (make sure you have a valid MassCore key. The MassCore 64bit and RTX64 keys are required for 64-bit systems.)

Note: RTX Dongle Users (SSK-HUD-RTX) MUST first install its driver manually :

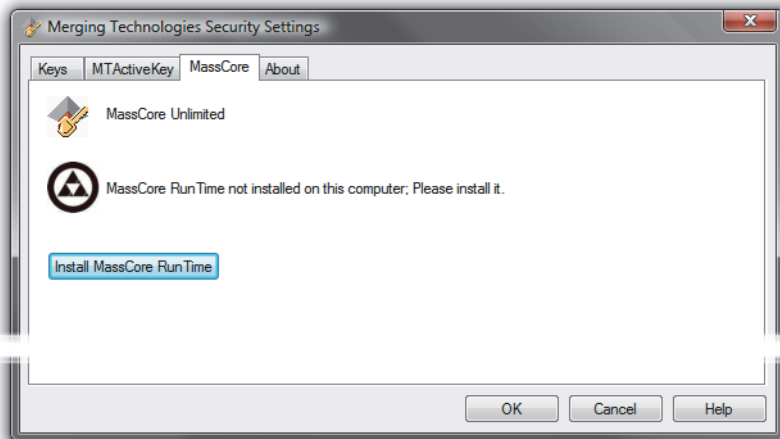
<http://sentinelcustomer.safenet-inc.com/sentineldownloads/?s=&c=End+User&p=Sentinel+HASP+HL&o=all&t=all#>

Select: **Sentinel HASP/LDK - Windows GUI Run-time Installer**

7. For automatic RTX licence validation on 64-bit systems ensure the system is connected to the Internet during the MassCore installation.
8. In the **MT Security Panel** select the MassCore Tab

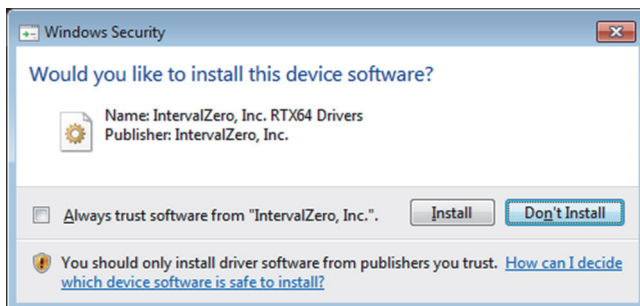


9. Press the **Install MassCore RunTime** button (will only be enabled if the MassCore Base Key is present)
Please note that the installation process can take some time to proceed.



VS3 merging Technologies Security Settings dialog

10. A Windows Security RTX Driver approval dialog will appear:

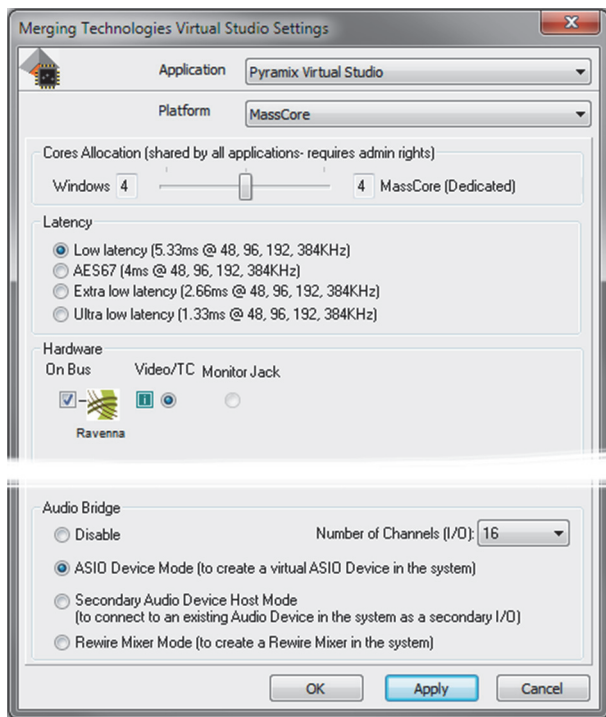


Windows Security dialog

11. Click **Install** in both dialogs or check the **Always trust software from Interval Zero, Inc.** box.
12. Restart System after the install.
*Please note: After installation you should see an **Interval Zero** entry in **Windows Control Panel > Programs and Features**. This should read: **Interval Zero RTX64 2014 Runtime with Service Pack 1***



13. Launch the **VS3 Control Panel**



VS3 Merging Technologies Virtual Studios Settings dialog

14. In the Platform section select **MassCore**

15. We recommend the use of **Low latency** mode by default . **Ultra low latency** & **Extra low latency** are available for Horus / Hapi users with Pyramix v10.x recommended configurations.

<http://www.merging.com/pages/pcconfig>

64 Bit MassCore Notes

- Double licence protection, both MassCore 64bit and RTX64 keys are required BEFORE MassCore installation.
- The MassCore 64 bit installation can be performed only if these two keys are present.
- The RTX64 Activation key licence is authorized by an online tool on Interval Zero's site after the Merging software (MassCore) installation is complete.
- Note that the RTX64 MassCore licence can only be installed ONCE, since it is locked to the system.
- At present if there is a requirement use MassCore Pyramix on two different computers regularly, it will be necessary to purchase a second MassCore 64bit Base key. **Note** that a solution exists for those who would like to have their MassCore/RTX64bit keys stored on a dongle (Hasp/IntervalZero), instead of having them linked to a unique system. This allows users to move their MassCore/RTX64 licensing to different systems by carrying two dongles (Merging-SafeNet & IntervalZero-HASP). This solution requires the purchase of an additional dongle. Please contact your local Merging Technologies sales office if you require this option.



Re-licencing MassCore 64 bit RTX

If a system needs to be re-licenced e.g after a Windows OS re-installation or if it is necessary to move the licence to another system, then you should contact us at:

keys@merging.com

Please give the reason for your system migration or re-installation since the RTX64 key is not intended to be renewed frequently.

If Merging cannot follow up with a timely response (in emergency or at weekends) please contact the Interval Zero (RTX) sales team.

Please ensure that you have the RTX64 Authorization Key number (RTX64-XXX-XXXX-XXXX...) when doing so.

Interval Zero Support team:

sales@intervalzero.com



9 MassCore - Ravenna



Certified Operating Systems (OS) for Ravenna

Ovation Version 6.x MassCore in Ravenna mode is certified under Windows 7 Professional (64-bit version) ONLY.

System Requirements

We maintain a list of up to date PC configurations in the Support Section of our website at:

<http://www.merging.com/pages/pcconfig>

Please refer to the MassCore-Ravenna recommendations (Quad-Core is the minimum requirement)

Required Hardware

The Merging Technologies NET-MSC-GBEX1 PCIe Ethernet controller card is required for MassCore - Ravenna.

Install the NET-MSC-GBEX1 Ethernet Card

The NET-MSC-GBEX1 PCIe card should be installed in your computer before installing Ovation v6.x.



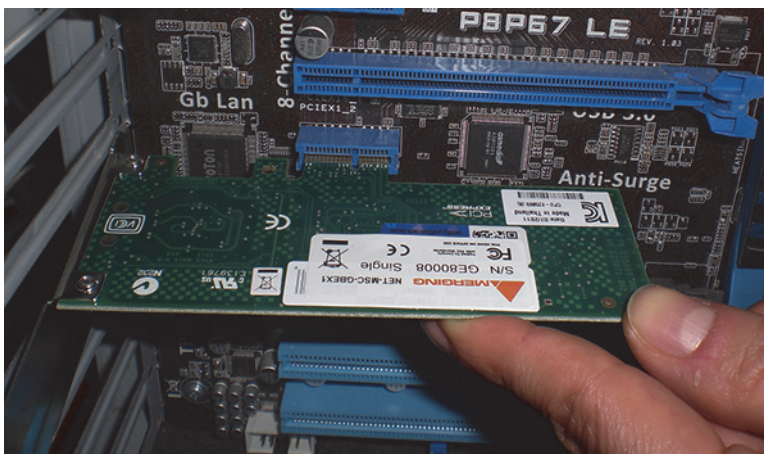
Procedure

1. Power down your PC and switch it off at the wall. Remove the screws securing the top or side of the case and carefully slide off the panel.
2. An anti-static wristband is sensible precaution whenever working with sensitive electrical equipment. Keeping one hand on a metal part of the case will have the same effect, though you may need both hands when installing certain items of hardware.
3. Locate an empty PCIe slot and remove the metal backing plate by removing the screw holding it in place and carefully sliding it up and out. In some cases, there are no backing plates and you will need to



remove a length of metal instead. Do this using a flat-blade screwdriver and/or pliers, taking care to avoid any sharp edges left behind.

4. Remove the NET-MSC-GBEX1 card from its protective anti-static envelope and align it with the vacant PCIe slot as shown below.



5. Push down, gently at first, ensuring you have the pins aligned correctly with the slot, and then apply more pressure to slot the card fully home.
6. Use the screw which was used to retain the backing plate to secure the card in place and check that the card sits comfortably.
7. Finally, replace the case cover(s) and switch the machine back on at the socket.
8. At the next power up and boot Windows will discover the Merging Ethernet PCIe card.

Ovation v5.x can now be installed.

Required Software

In order to operate Ovation with Ravenna and Horus /Hapi, Ovation v6.x must be installed. The Ovation v6.x installer includes; the MassCore-Ravenna Connect utility, MT Discovery tool along with Apple bonjour.

Note: Driver signing. Please tick **Always trust “Merging Technologies”** when the first warning message about unsigned drivers appears.

Enter your Ovation keys

Launch MTSecurity settings and enter your Ovation v6.x keys. **Please see Entering your Key(s) on page 21**

Install MassCore

Please see: MassCore Installation on page 23

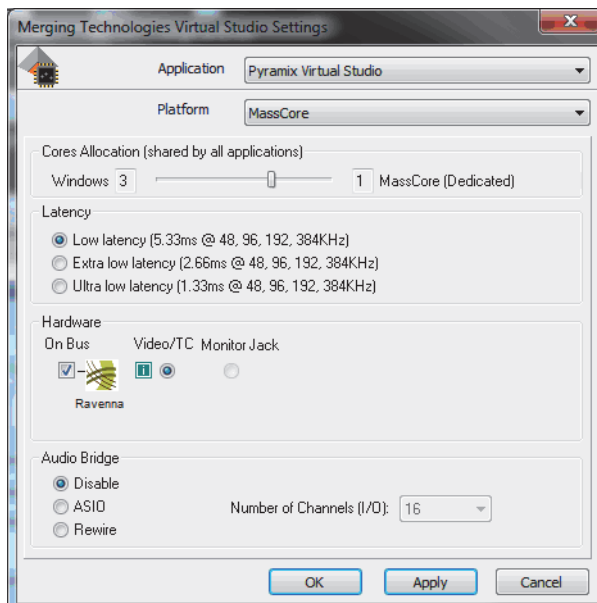
Note: A valid MassCore (Base) key is mandatory.

The MassCore key is held on the Safenet dongle. Please make sure that you are in possession of a dongle and valid keys in order to operate Ovation in MassCore-Ravenna mode.

Note: The NET-MSC-GBEX1 Ethernet card requires MassCore in order to function.



Configure Ravenna in the VS3 Control Panel



VS3 Merging Technologies Virtual Studios Settings dialog

1. Launch the **VS3 Control Panel**
2. **Cores Allocation** Leave on the default setting for now.
3. **Latency** Leave on the default setting **Low Latency** (only mode supported at present)
4. Select **Platform : MassCore**
5. Select **Hardware : On Bus** as **Ravenna** (box ticked)
6. Audio Bridge : Set as required.
7. Click on the **OK** button.
8. When the VS3 panel **Do you want to save routing?** dialog box appears, click on **OK**
9. the VS3 control panel will close.



Before First Launch

Before launching Ovation v6.x, you must ensure that a **PTP Master*** is present on your Ravenna network. Merging Technologies recommends using its **Horus** converter as PTP Master.

*The Precision Time Protocol (PTP) is a protocol used to synchronize clocks throughout a computer network.

Note: As of v6.x RAVENNA mode supports all three Latency modes. (VS3 Control Panel). To enable RAVENNA I/O connections please refer to the separate RAVENNA Easy Connect Guide.

Note: Horus users should refer to the Horus User Manual for configuration set-up with Pyramix.

Troubleshooting

Ravenna: Horus / Hapi & Network configuration

Merging recommend that the Ethernet MassCore card and Horus / Hapi are configured to obtain an IP address automatically.

Setting Horus / Hapi and Network Card to Obtain IP Addresses Automatically Network Card

1. Open **Network Connections** in the Windows **Control Panel**
2. Right-click on the MassCore Ethernet card NET-MSC-GBEX1 and open **Properties**.
3. Select **Internet Protocol Version 4, TCP/IPv4** (which is the only one activated) and click on **Properties**.
4. Select the **Obtain an IP address automatically** option.
5. Click on **OK** in each dialog to accept the changes and close the dialogs.

Horus

1. Open the **Horus / Hapi Setup > Advanced > Network** page
2. In the **IP address** section select **Auto**

Setting Fixed IP addresses

1. First, check the IP address of the Horus / Hapi device under Setup > Network
To be able to see each other, the Merging Technologies Network card and Horus / Hapi must be in the same range of addresses. (for example 192.168.xxx.xx).
2. The Horus IP address can be checked (and changed if required in the **Horus / Hapi Setup page > Network**)
3. The IP address of the MT Network card can be changed in **Windows Control Panel > Change Adapter Settings**
4. Right click on the Merging Technologies NIC and select **Properties**.
5. Select **Internet Protocol Version 4, TCP/IPv4** (which is the only one activated) and click on **Properties**.
6. Switch to **Use the following IP address** and enter an IP address that is in the same range as the Horus IP address. The Subnet Mask should be added automatically.
7. Click on **OK** in each dialog to accept the changes and close the dialogs.

Windows Firewall and UAC

Recommendation

If not configured correctly, Windows Firewall can block communication between MassCore and Horus / Hapi. User Account Control should also be set to **Never Notify**.

Firewall

- Open the Windows **Control Panel**. Open the **System and Security** section and under **Windows Firewall** disable the Firewall for the Public Network.



- Go back to the Windows **Control Panel** and click on Windows **Firewall**. Click on **Change notification settings**. Ensure **Block all incoming connections, including those in the list of allowed programs** is **NOT** ticked.
User Account Control
- Open the Windows **Control Panel**. Open the **User Accounts** section and under **Change User Account Control Settings** move the slider down to **Never Notify**.

Antivirus

Recommendation

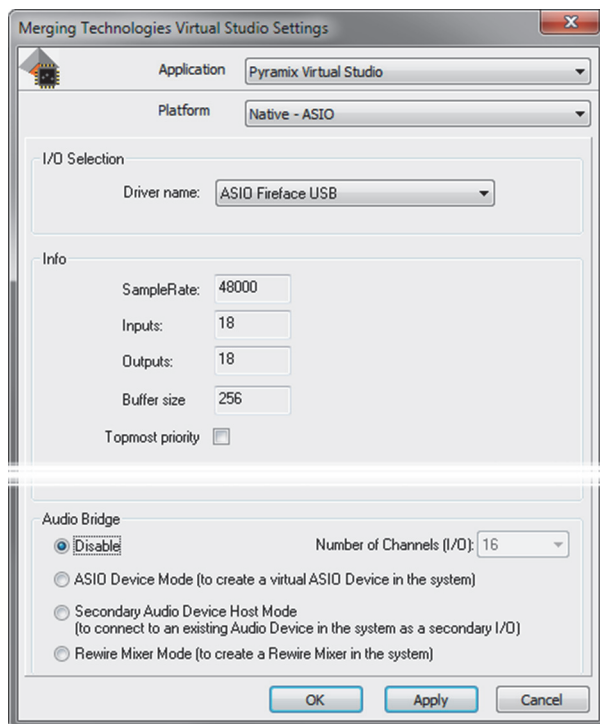
Merging also recommends that any Antivirus software be disabled. Some Antivirus software such as *Avast* have been known to block the Horus / Hapi discovery and Ravenna I/O connections.



10 Native - ASIO

Install Pyramix and the drivers for your ASIO device.

Configure ASIO in the VS3 Control Panel



VS3 Merging Technologies Virtual Studios Control Panel

1. Launch the VS3 Control Panel (**Start: All Programs > Merging Technologies > VS3 Runtime > VS3 Control Panel**)
2. Select **Platform : Native - ASIO**
3. Select **I/O Selection ; Driver name** : Select your ASIO device from the drop-down list
4. **Audio Bridge** : Set as required.
5. Click on the **OK** button.
6. When the VS3 panel **Do you want to save routing?** dialog box appears, click on **OK**
7. The VS3 control panel will close.
8. The Inputs and Outputs present on the ASIO device will now be available in Pyramix.



11 First launch

Important! After installation has been completed, please reboot the PC before attempting to launch Ovation. Then open the **VS3 control panel** application.

Start : All Programs > Merging Technologies > VS3 Runtime > VS3 control panel

For Systems with MassCore RAVENNA

Please see: **Configure Ravenna in the VS3 Control Panel** on page 29

For Native Systems

Please see: **Configure ASIO in the VS3 Control Panel** on page 32

Launch Pyramix

Double-click on the **Pyramix Virtual Studio** desktop icon to launch Pyramix.

Note: At the first launch a firewall approval dialog may appear:

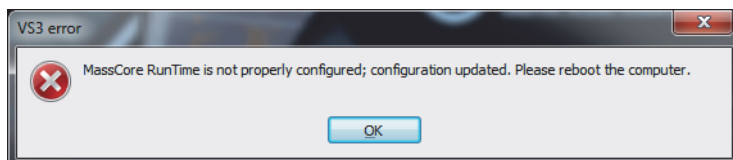


Windows Security Alert dialog -Windows Firewall

Click on **Allow access** since this is necessary to ensure correct VT2 (Virtual Transport 2) functioning.

Note: For further information about options available in the VS3 Control Panel, please see the Pyramix User Manual.

Note: At first Pyramix launch and or after installing MassCore the following alert box may appear. If it does please reboot the computer one more time:



VS3 error alert box



Firewall Approval on First Launch

Note: At the first launch a Firewall approval dialog may appear:

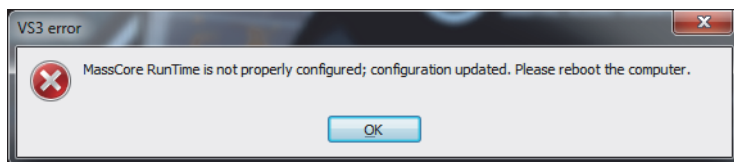


Windows Security Alert dialog -Windows Firewall

In the **Allow Pyramix Virtual Studio Application to communicate on these networks** section ensure the **Private networks...** box is ticked since this is necessary to ensure correct VT2 (Virtual Transport 2) functioning and, for a MassCore system with RAVENNA and Horus, ensure the **Public Networks...** box is also ticked.

Note: For further information about options available in the VS3 Control Panel, please see the Pyramix User Manual.

Note: At first Pyramix launch and or after installing MassCore the following alert box may appear. If it does please reboot the computer one more time:



VS3 error alert box

Documentation

The **User Manual** and **Quick Start Guide** are available from within Pyramix and may be accessed via the **Help** menu or by pressing **F1**, or online at:

<http://www.merging.com/downloads>



12 Troubleshooting

Please visit regularly:

www.merging.com

for the latest Troubleshooting Guide and FAQ sections.



13 Lost or Stolen Merging Technologies Security Keys

(Sentinel / HASP USB Dongles)

The Merging USB Key carries all the value of your Merging software and the software licence authorization to use it. Please ensure you do not lose the USB key as Merging Technologies cannot be held responsible if this is lost or stolen.

If your USB key is lost or stolen then please make a claim on your insurance in the usual way just as you would for any other item you own. Merging will be happy to confirm the details and value of the software licence and USB key to your insurance company. If your USB key is lost or stolen and a different user should attempt to register for this key, Merging will notify you and the authorities in your country that an attempt has been made to register this stolen item.

If your USB key should become defective or is broken, please ensure this key is returned to merging after requesting and RMA (Return Merchandise Authorization.) Only after the receipt of this key in the Merging Offices will it be determined if it may be exchanged under warranty free-of-charge, or if the damage is outside the warranty scope. in which case only a modest fee to replace it with a new key will be charged (and not the entire value of the software.)



14 Contacting Merging

International Office:

Merging Technologies S.A.

Le Verney 4

CH-1070 Puidoux

Switzerland

Phone: +41 21 946 0444

Fax: +41 21 946 0445

UK:

Merging UK (Emerging Ltd)

23 Campbell Court

Campbell Road

Bramley

Hampshire

RG26 5EG

UK

Phone: +44 (0) 118 402 5090

Fax: +44 (0) 870 123 1747

Email: sales@merginguk.com

USA:

Merging USA (Independent Audio)

43 Deerfield Road

Portland,

ME 04101-1805

United States of America

Phone: +1 (207) 773 2424

Fax: +1 (207) 773 2422

For all documentation inquiries or suggestions for improvement:

<http://www.merging.com>



Index

A

Aero graphics 18
Antivirus 31

B

BIOS Settings 17

C

Changing or re-entering a Key 21
Contacting Merging 37

D

Display Settings 17
Do you want to save routing? 29
Driver Signing 20

E

Entering Keys 21

F

Firewall 30
First launch
 Single board system 31, 33
Flux VS3/V3 plug-ins 20

I

Import Key 21
Increase Scheduling Priority 14
Increase scheduling priority 15
Indexing 18
Introduction 7

K

Keys 22

M

MassCore
 Ravenna 27
MassCore and Networks 14
MassCore Network Permissions 14
MassCore Systems 13
MT Security Settings 21
Mykerinos Installation 19
Mykerinos serial number 22

N

Native Install 20

O

Other Applications 18

P

PC Setup 17
Power Management 18
Power Schemes 18

R

Ravenna 27

S

SafeNet dongle 20
small fonts 17
Software Installation 19
Software Registration 21
System Requirements 13

T

Thank you 7
Troubleshooting 35

U

UAC 30
User Account Control 31

V

VB VS3 plug-ins 20
VS3 control panel 29

W

Windows Firewall 30

Y

YourPersonalKey 21

